

flexible spaces all the right places...



...Brooklyn Heights Business Centre I
950 Keynote Cir., Brooklyn Heights, Ohio



...Brooklyn Heights Business Centre II & III
1100 & 1200 Resource Dr., Brooklyn Heights, Ohio

“Flexible Spaces in All the Right Places” is what Fogg had in mind when designing their large portfolio of office, industrial and office/warehouse (flex) properties. Strategically located near major freeways in northeast Ohio, Fogg’s properties offer flexible floor plans, truck access and lease terms, as well as expansion opportunities for their growing customers.

Centrally located, these properties in Brooklyn Heights, Ohio, offer modern office, warehouse and flex space with great freeway access. The buildings are exceptionally attractive and well landscaped, resulting in a high profile image. Brooklyn Heights Business Centre I, II & III are located minutes from I-480, I-77, Jennings Freeway (Rt. 176), downtown Cleveland and Cleveland Hopkins International Airport.



CORPORATE PROPERTIES

216.351.7976
fogg.com

“The entire Fogg team provided tremendous cooperation during the leasing and construction of our new corporate headquarters and high bay distribution center. We are completely satisfied with the building and with the support that we’ve received from Fogg since we moved into our new facility” - **Guardian Technologies**

STANDARD BUILDING SPECIFICATIONS

Brooklyn Heights Business Centre I, II & III

The following information is a general description of the project. Please see the Individual Space Specifications for more details on each available space.



LOCATION & ACCESS

Brooklyn Heights Business Centres I, II & III

- Minutes from I-480, I-77 and Jennings Freeway Rt. 176 North
- Seven (7) miles from downtown Cleveland
- Within 10.5 miles of Cleveland Hopkins International Airport
- Immediately east of the I-480/Granger interchange and west of Rt. 21 Cloverleaf with access to I-77

PROPERTY DATA

- Brooklyn Heights Business Centre I: 49,773 SF
- Brooklyn Heights Business Centre II: 49,082 SF
- Brooklyn Heights Business Centre III: 36,290 SF

CLEAR HEIGHT

- Brooklyn Heights Business Centre I: 13' 8" to 14' 5"
- Brooklyn Heights Business Centre II: 16' 8" to 18'
- Brooklyn Heights Business Centre III: 11' 8" to 12'

COLUMN SPACING

- Brooklyn Heights Business Centre I, II & III: 30' x 30'

TRUCK ACCESS/DOORS

- Truck docks with insulated metal industrial doors
- Drive-Ins with insulated metal industrial doors
- Personnel Door: 20-gauge flush hollow metal door

ROOF

- 3-ply, pea gravel, built-up roof

EXTERIOR WALLS

- Brick and mortar

FLOOR

- 5" concrete slab

WAREHOUSE LIGHTING

- Fluorescent fixtures

SPRINKLER SYSTEM

- Wet / Ordinary hazard

HVAC

- Warehouse: gas-fired unit heaters (Heating 60°F temperature difference at 0°F outside)
- Office: gas-fired furnace with electric air conditioner (Heating 68°F temperature difference at 0°F outside; Air Conditioning 15°F temperature difference at 90°F outside)

OFFICE AREAS

- Partitions: 1/2" drywall on 3-5/8" metal studs
- Ceiling: 5/8" (2' x 4') acoustical tile on a suspended T- grid system
- Floors: commercial grade carpeting or vinyl tile (VCT)
- Entrance Doors: glass with aluminum tubular frames
- Interior Doors: 1-3/8" flush birch doors with hardware
- Windows: insulated glass with aluminum tubular frames
- Paint: two coats of Latex Paint on drywall
- Plumbing: surface mounted water closets and lavatories
- Lighting: fluorescent fixtures

PARKING & DRIVES

- Automobile Parking: asphalt
- Truck Drive / Ramps: asphalt and concrete

UTILITIES

- Electric: The Illuminating Co.
- Gas: Dominion East Ohio
- Telephone: AT&T
- Water: City of Cleveland
- Sanitary & Storm: City of Cleveland



216.351.7976
fogg.com

FOR LEASE

18,207 Sq. Ft. Warehouse – Office
1100 Resource Drive, Brooklyn Heights, Ohio

Individual Space Specifications Brooklyn Heights Business Center 2

Office Area:	12,700 SF
Warehouse Area:	<u>5,507</u> SF
Total Area:	18,207 SF
Unit Numbers:	8 & 9
Drive-in Doors:	One (1) 8' x 10' overhead door One (1) 10' x 10' overhead door
Truck Docks:	Two (2) 8' x 10' overhead doors
Clear Height:	16'-8" to 18'-3" warehouse clear height
Column Spacing:	30' x 30'
Electricity:	277/480 Volt, 125 Amp, 3 phase, 4 wire service 120/208 Volt, 100 Amp & 200 Amp, 3 phase, 4 wire service
Lighting:	High lumen T8 lamps and instant start, electronic ballasts: <ul style="list-style-type: none">• Energy efficient (50% less consumption than traditional T12 lighting)• Only 7% luminary depreciation over the life of the bulb
Sprinklers:	Wet / Ordinary Hazard
Estimated Operating Costs:	\$2.60/SF/YR based upon budget costs for 2021.

Operating cost estimates are based on Real Estate Taxes, Building Insurance, Common Area Maintenance and Property Management Fees for the year and the square footage listed above. Costs may vary in the future. Common Area Maintenance includes only the maintenance items performed by the owner for the benefit of the entire project, such as snowplowing, lawn care, backflow prevention test and general exterior maintenance, etc.



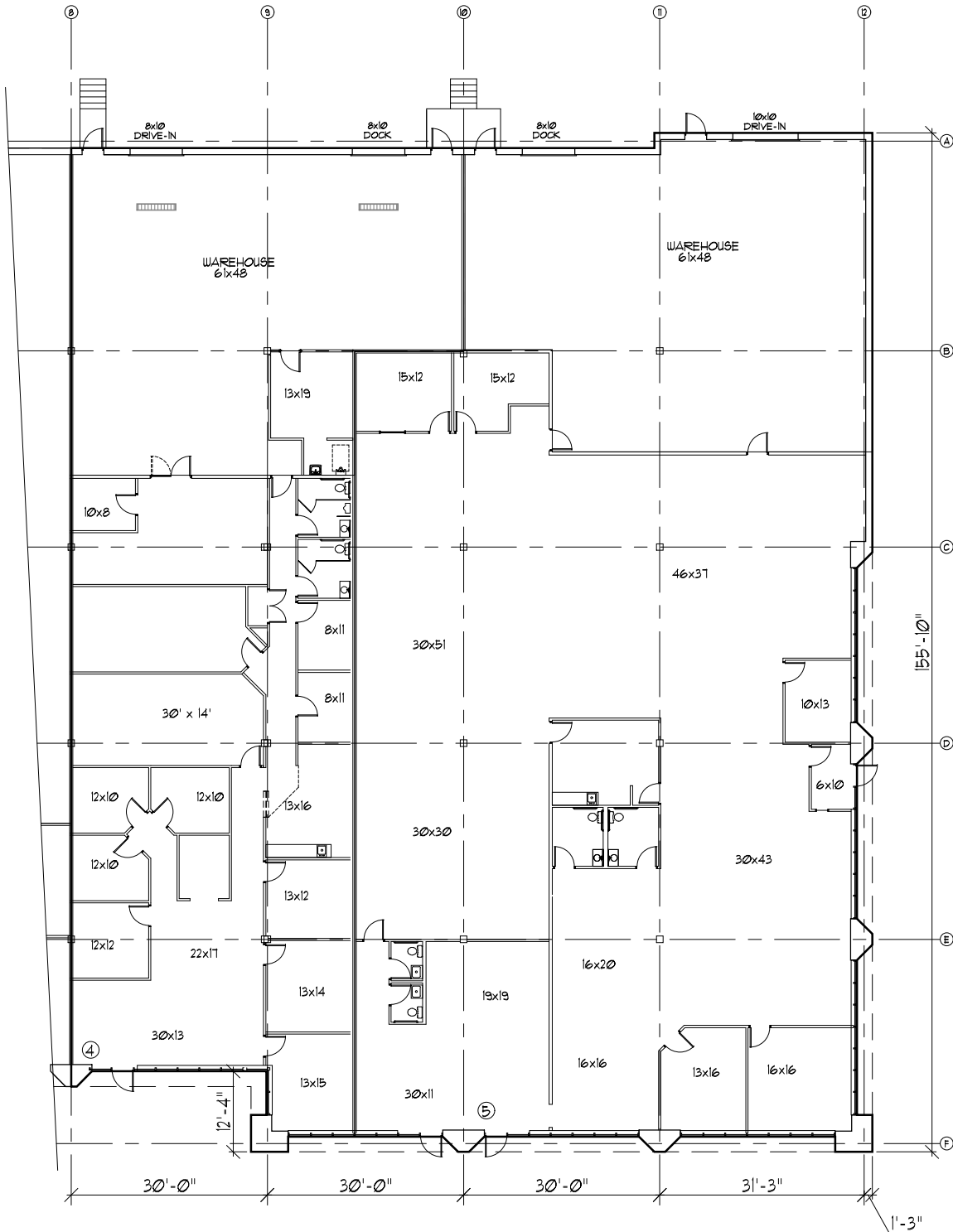
flexible spaces
all the right places.

Mark Ray, Vice President
216-351-7976, ext. 244
markray@fogg.com

Tom Blaz, Leasing Associate
216-351-7976, ext. 273
tblaz@fogg.com

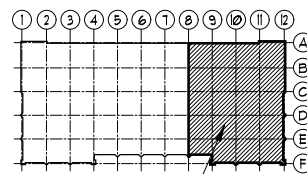
fogg.com

BROOKLYN HEIGHTS BUSINESS CENTER
 1100 RESOURCE DRIVE
 BROOKLYN HEIGHTS, OHIO 44131



12,100 SF OFFICE
 5,507 SF WAREHOUSE
 18,207 SF TOTAL

FLOOR PLAN



KEY PLAN LOCATION

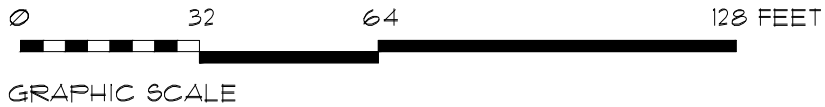
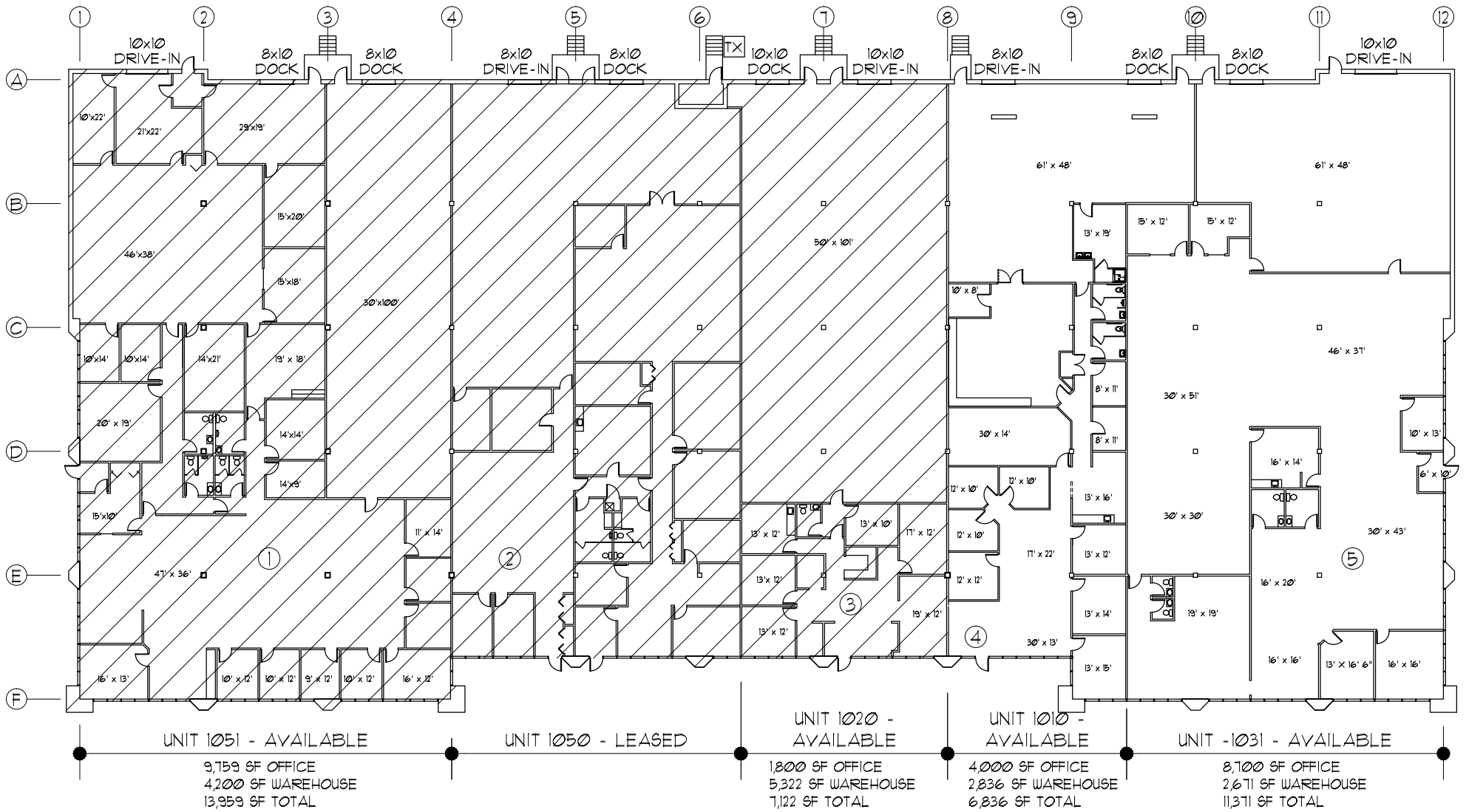
RAY FOGG CORPORATE PROPERTIES, LLC
 981 KEYNOTE CIRCLE, SUITE 15
 BROOKLYN HEIGHTS, OHIO

(216) 351-7976
 1-877-729-3644

FOGG
 ENGINEERS • ARCHITECTS • INTERIORS

RAY FOGG BUILDING METHODS, INC.
 1100 RESOURCE DRIVE, SUITE 15, BROOKLYN HEIGHTS, OHIO 44131
 PHONE (216) 351-7976

DESIGNED BY	DATE	SCALE	PROJECT NO.	DATE
DMS	4-13-2015			



EXISTING CONDITIONS FLOOR PLAN - 1100 RESOURCE DRIVE