

flexible spaces all the right places...



...26700 Brookpark Rd. Extension
North Olmsted, Ohio

“Flexible Spaces in All the Right Places” is what Fogg had in mind when designing their large portfolio of office, industrial and office/warehouse (flex) properties. Strategically located near major freeways in northeast Ohio, Fogg’s properties offer flexible floor plans, truck access and lease terms, as well as expansion opportunities for their growing customers.

Our property is located in the thriving Greater Cleveland suburb of North Olmsted, Ohio which is only 15 minutes from downtown Cleveland. It is also within minutes of the I-480 Great Northern Blvd. Exit, Great Northern Mall and Cleveland Hopkins International Airport. This building provides ground floor access and ample parking.



“I have worked with various property managers finding corporate expansion facilities for the last twenty-five years in five different States and by far Ray Fogg Corporate Properties management services has the smoothest operations and the nicest people to work with.”

- E & R Industrial



216.351.7976
fogg.com

STANDARD BUILDING SPECIFICATIONS

26700 Brookpark Rd. Extension

The following information is a general description of the project. Please see the Individual Space Specifications for more details on each available space.



LOCATION & ACCESS

- 1.351 acre site fronting onto Brookpark Road Extension, north of Lorain Road, east of Dover Center Road and west of Great Northern Blvd., in North Olmsted, Ohio
- 1/4 mile from Great Northern Mall
- 4 miles from Cleveland Hopkins Airport
- 15 miles from Downtown Cleveland
- Access at I-480 (Great Northern Blvd. Exit)

PROPERTY DATA

- | | | |
|------------------------|--------|-----------|
| • Initial Construction | (1981) | 10,000 SF |
| • Expansion | (1984) | 7,548 SF |
| • Total Project | | 17,548 SF |

EAVE HEIGHT

- Exterior - 14' 8"

ROOF

- Single ply rubber roof
- Insulated (R = 15)

FLOOR

- 4" reinforced concrete

EXTERIOR WALLS

- Modern design using dryvit and rough sawn wood
- Insulated (R = 12)

HVAC

- Natural gas, rooftop mounted units; 50-tons
- Office: gas-fired furnace with electric air conditioner (Heating 68°F temperature difference at 0°F outside; Air Conditioning 15°F temperature difference at 90°F outside)

OFFICE AREAS

- Partitions: 5/8" drywall on 3-5/8" metal studs
- Ceiling: 2' x 4' acoustical tile on suspended T-grid system
- Floor: commercial grade carpeting or vinyl tile (V.C.T.)
- Entrance Doors: glass with aluminum tubular frames
- Interior Doors: 1-3/8" flush birch on hollow metal doors with hardware
- Paint: two coats of Latex paint on drywall; enamel on door frames
- Plumbing: surface mounted water closets and lavatories
- Lighting: fluorescent fixtures (2' x 4')

PARKING & DRIVES

- Automobile Parking: asphalt
- Landscaping: all open areas have grass lawns and shrubbery surrounding the building

UTILITIES

- Electric: The Illuminating Company (600 amps, 120/208 volts, 3-phase, 4 wire)
- Gas: Dominion East Ohio
- Telephone: At&t
- Water: City of Cleveland (12" line)
- Sanitary & Storm Sewer: City of Cleveland (4" line)
- Sewer: Lake County Department of Utilities

The information contained herein is from sources deemed reliable, but no warranty or representation is made to the accuracy hereof.



...26700 Brookpark Rd. Extension
North Olmsted, Ohio

216.351.7976
fogg.com

FOR SALE OR LEASE

17,548 Sq. Ft. Office

26700 Brookpark Road Extension, North Olmsted, Ohio

Individual Space Specifications

- Office Area:** 17,548 SF
- Features:**
- Ground Floor Private Office
 - Ample Parking
 - Zoned for General Business, Retail
 - Private Entrance
 - 1/4 mile from Great Northern Mall
 - 4 miles from Cleveland Hopkins International Airport
 - 15 miles from Downtown Cleveland
 - Easy Access via I-480
- Electricity** 200 Volt, 600 Amp and 240 Volt, 200 Amp, 3 phase, 4 wire service
- Lighting:** High lumen T8 lamps and instant start, electronic ballasts:
- Energy efficient (50% less consumption than traditional T12 lighting)
 - Only 7% luminary depreciation over the life of the bulb
- Estimated Operating Costs:** \$4.76SF/YR based on budget costs for 2018.

Operating cost estimates are based on Real Estate Taxes, Building Insurance, Common Area Maintenance and Property Management Fees for the year and the square footage listed above. Costs may vary in the future. Common Area Maintenance includes only the maintenance items performed by the owner for the benefit of the entire project, such as snowplowing, lawn care, backflow prevention test and general exterior maintenance, etc.



flexible spaces
all the right places.

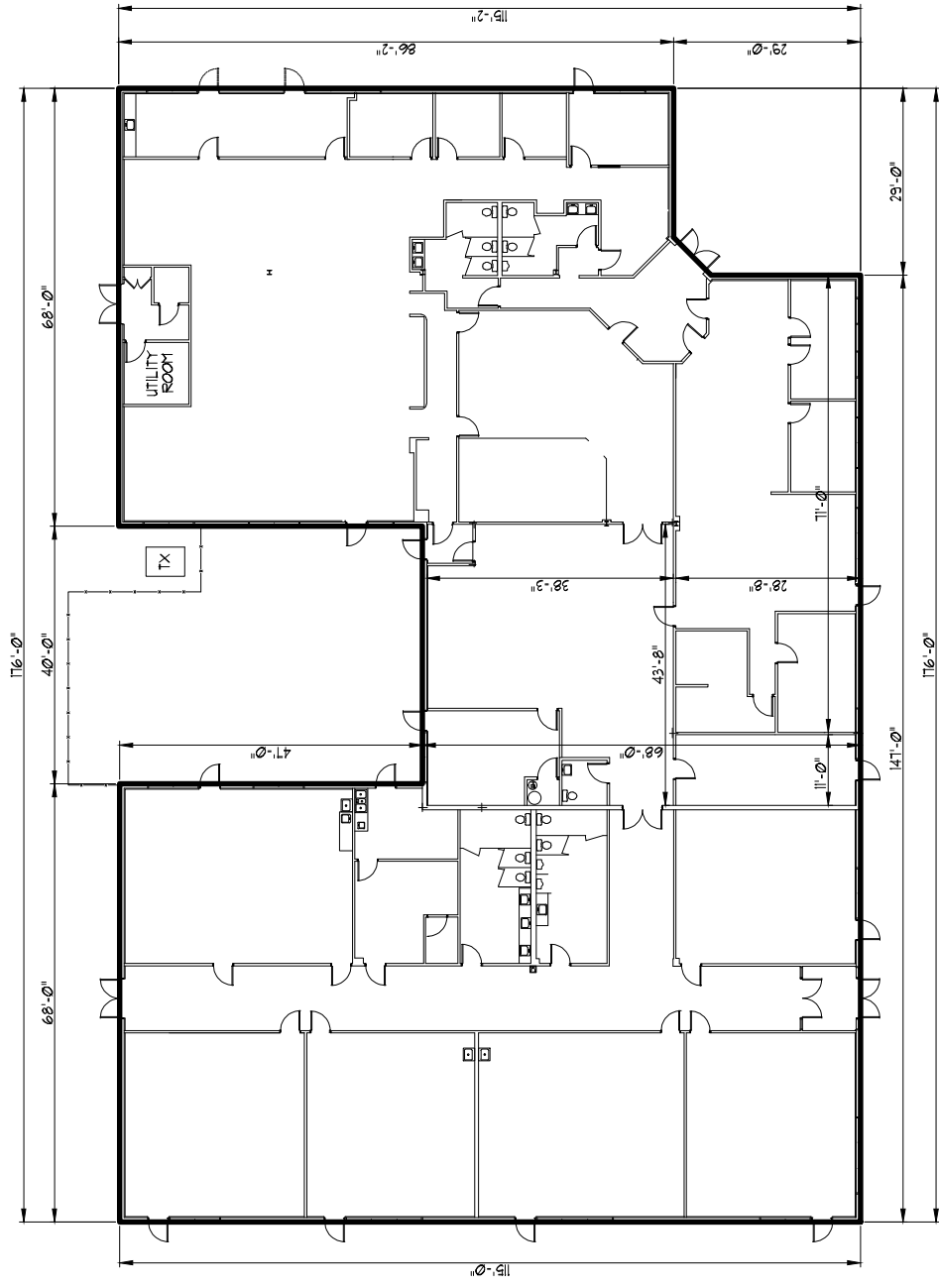
Mark Ray, Vice President
216-351-7976, ext. 244
markray@fogg.com

Tom Blaz, Leasing Associate
216-351-7976, ext. 273
tblaz@fogg.com

fogg.com

RAY FOGG CORPORATE PROPERTIES, LLC – 981 Keynote Circle, Suite 15 – Cleveland, Ohio 44131

The information contained herein is from sources deemed reliable, but no warranty or representation is made to the accuracy hereof.



FOGG NORTH OLMSTED
 76700 BROOKPARK ROAD EXT.
 NORTH OLMSTED, OH



RAY FOGG CONSULTING CORPORATION, INC.
 10000 WOODBURN AVENUE, SUITE 100
 CLEVELAND, OH 44131
 WWW.FOGG.COM

DATE	NO.	BY	REVISIONS	SCALE
05/20/15	001	RSK	1.0	AS SHOWN
05/20/15	002	RSK	2.0	AS SHOWN
05/20/15	003	RSK	3.0	AS SHOWN
05/20/15	004	RSK	4.0	AS SHOWN
05/20/15	005	RSK	5.0	AS SHOWN
05/20/15	006	RSK	6.0	AS SHOWN
05/20/15	007	RSK	7.0	AS SHOWN
05/20/15	008	RSK	8.0	AS SHOWN
05/20/15	009	RSK	9.0	AS SHOWN
05/20/15	010	RSK	10.0	AS SHOWN
05/20/15	011	RSK	11.0	AS SHOWN
05/20/15	012	RSK	12.0	AS SHOWN
05/20/15	013	RSK	13.0	AS SHOWN
05/20/15	014	RSK	14.0	AS SHOWN
05/20/15	015	RSK	15.0	AS SHOWN
05/20/15	016	RSK	16.0	AS SHOWN
05/20/15	017	RSK	17.0	AS SHOWN
05/20/15	018	RSK	18.0	AS SHOWN
05/20/15	019	RSK	19.0	AS SHOWN
05/20/15	020	RSK	20.0	AS SHOWN
05/20/15	021	RSK	21.0	AS SHOWN
05/20/15	022	RSK	22.0	AS SHOWN
05/20/15	023	RSK	23.0	AS SHOWN
05/20/15	024	RSK	24.0	AS SHOWN
05/20/15	025	RSK	25.0	AS SHOWN
05/20/15	026	RSK	26.0	AS SHOWN
05/20/15	027	RSK	27.0	AS SHOWN
05/20/15	028	RSK	28.0	AS SHOWN
05/20/15	029	RSK	29.0	AS SHOWN
05/20/15	030	RSK	30.0	AS SHOWN
05/20/15	031	RSK	31.0	AS SHOWN
05/20/15	032	RSK	32.0	AS SHOWN
05/20/15	033	RSK	33.0	AS SHOWN
05/20/15	034	RSK	34.0	AS SHOWN
05/20/15	035	RSK	35.0	AS SHOWN
05/20/15	036	RSK	36.0	AS SHOWN
05/20/15	037	RSK	37.0	AS SHOWN
05/20/15	038	RSK	38.0	AS SHOWN
05/20/15	039	RSK	39.0	AS SHOWN
05/20/15	040	RSK	40.0	AS SHOWN
05/20/15	041	RSK	41.0	AS SHOWN
05/20/15	042	RSK	42.0	AS SHOWN
05/20/15	043	RSK	43.0	AS SHOWN
05/20/15	044	RSK	44.0	AS SHOWN
05/20/15	045	RSK	45.0	AS SHOWN
05/20/15	046	RSK	46.0	AS SHOWN
05/20/15	047	RSK	47.0	AS SHOWN
05/20/15	048	RSK	48.0	AS SHOWN
05/20/15	049	RSK	49.0	AS SHOWN
05/20/15	050	RSK	50.0	AS SHOWN
05/20/15	051	RSK	51.0	AS SHOWN
05/20/15	052	RSK	52.0	AS SHOWN
05/20/15	053	RSK	53.0	AS SHOWN
05/20/15	054	RSK	54.0	AS SHOWN
05/20/15	055	RSK	55.0	AS SHOWN
05/20/15	056	RSK	56.0	AS SHOWN
05/20/15	057	RSK	57.0	AS SHOWN
05/20/15	058	RSK	58.0	AS SHOWN
05/20/15	059	RSK	59.0	AS SHOWN
05/20/15	060	RSK	60.0	AS SHOWN
05/20/15	061	RSK	61.0	AS SHOWN
05/20/15	062	RSK	62.0	AS SHOWN
05/20/15	063	RSK	63.0	AS SHOWN
05/20/15	064	RSK	64.0	AS SHOWN
05/20/15	065	RSK	65.0	AS SHOWN
05/20/15	066	RSK	66.0	AS SHOWN
05/20/15	067	RSK	67.0	AS SHOWN
05/20/15	068	RSK	68.0	AS SHOWN
05/20/15	069	RSK	69.0	AS SHOWN
05/20/15	070	RSK	70.0	AS SHOWN
05/20/15	071	RSK	71.0	AS SHOWN
05/20/15	072	RSK	72.0	AS SHOWN
05/20/15	073	RSK	73.0	AS SHOWN
05/20/15	074	RSK	74.0	AS SHOWN
05/20/15	075	RSK	75.0	AS SHOWN
05/20/15	076	RSK	76.0	AS SHOWN
05/20/15	077	RSK	77.0	AS SHOWN
05/20/15	078	RSK	78.0	AS SHOWN
05/20/15	079	RSK	79.0	AS SHOWN
05/20/15	080	RSK	80.0	AS SHOWN
05/20/15	081	RSK	81.0	AS SHOWN
05/20/15	082	RSK	82.0	AS SHOWN
05/20/15	083	RSK	83.0	AS SHOWN
05/20/15	084	RSK	84.0	AS SHOWN
05/20/15	085	RSK	85.0	AS SHOWN
05/20/15	086	RSK	86.0	AS SHOWN
05/20/15	087	RSK	87.0	AS SHOWN
05/20/15	088	RSK	88.0	AS SHOWN
05/20/15	089	RSK	89.0	AS SHOWN
05/20/15	090	RSK	90.0	AS SHOWN
05/20/15	091	RSK	91.0	AS SHOWN
05/20/15	092	RSK	92.0	AS SHOWN
05/20/15	093	RSK	93.0	AS SHOWN
05/20/15	094	RSK	94.0	AS SHOWN
05/20/15	095	RSK	95.0	AS SHOWN
05/20/15	096	RSK	96.0	AS SHOWN
05/20/15	097	RSK	97.0	AS SHOWN
05/20/15	098	RSK	98.0	AS SHOWN
05/20/15	099	RSK	99.0	AS SHOWN
05/20/15	100	RSK	100.0	AS SHOWN

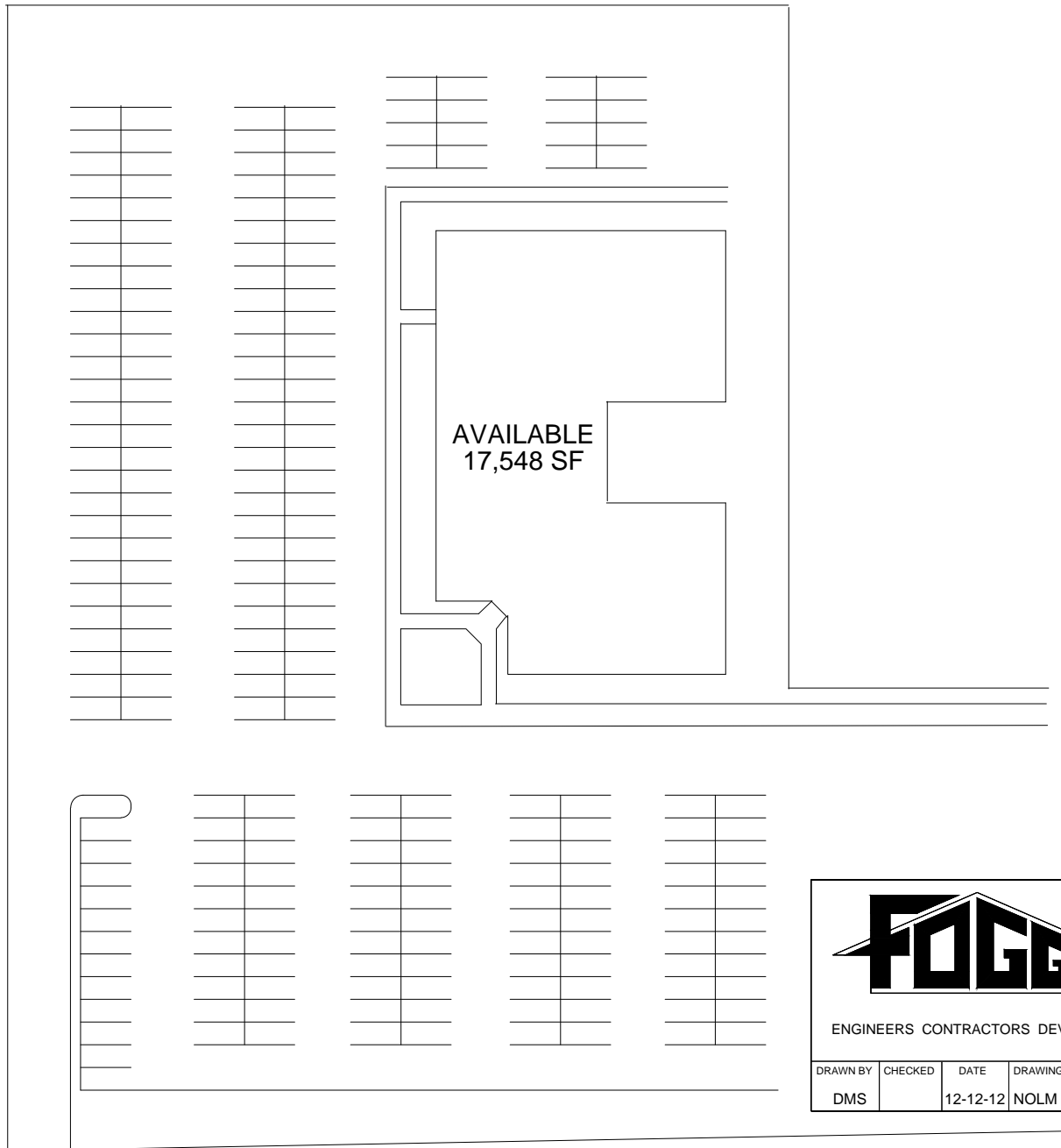
FLOOR PLAN

AVAILABLE SPACE
 11,548 SF

RAY FOGG CORPORATE PROPERTIES, LLC
 981 KEYNOTE CIRCLE, SUITE 15
 BROOKLYN HEIGHTS, OHIO 44131

(216) 351-1916
 1-877-129-3644

FOGG-NORTH OLMSTED
26700 Brookpark Road Extention
North Olmsted, Ohio 44070



ENGINEERS CONTRACTORS DEVELOPERS

DRAWN BY	CHECKED	DATE	DRAWING NO.
DMS		12-12-12	NOLM