

Brecksville Business Park



Brecksville Business Park

Fronting I-77 just north of the Ohio Turnpike in the upscale community of Brecksville, Ohio, Fogg has 40 acres of land suitable for an office development able to accommodate users up to 500,000 square feet. This freeway visible site is ideal for a corporate headquarters building or a large office campus. Located between Cleveland and Akron, the site is easily accessible from I-77, I-480, State Route 21 and the Ohio Turnpike (I-80). All utilities are available at the street and the sites are readily available for build-to-suit lease projects.



"The entire Fogg team provided tremendous cooperation during the leasing and construction of our new corporate headquarters and high bay distribution center. We are completely satisfied with the building and with the support that we've received from Fogg since we moved into our new facility" - Guardian Technologies



Brecksville Business Park

The following information is a general description of the project.



LOCATION & ACCESS

- I-77 freeway visibility
- Situated south of Miller Rd. and north of W. Snowville Rd. along I-77.
- Located in the high image community of Brecksville, OH
- Midway between Cleveland and Akron
- Access via W. Snowville Rd.
- Easy Access to I-77, Ohio Turnpike (I-80) and I-271

ZONING

- Office or Laboratory

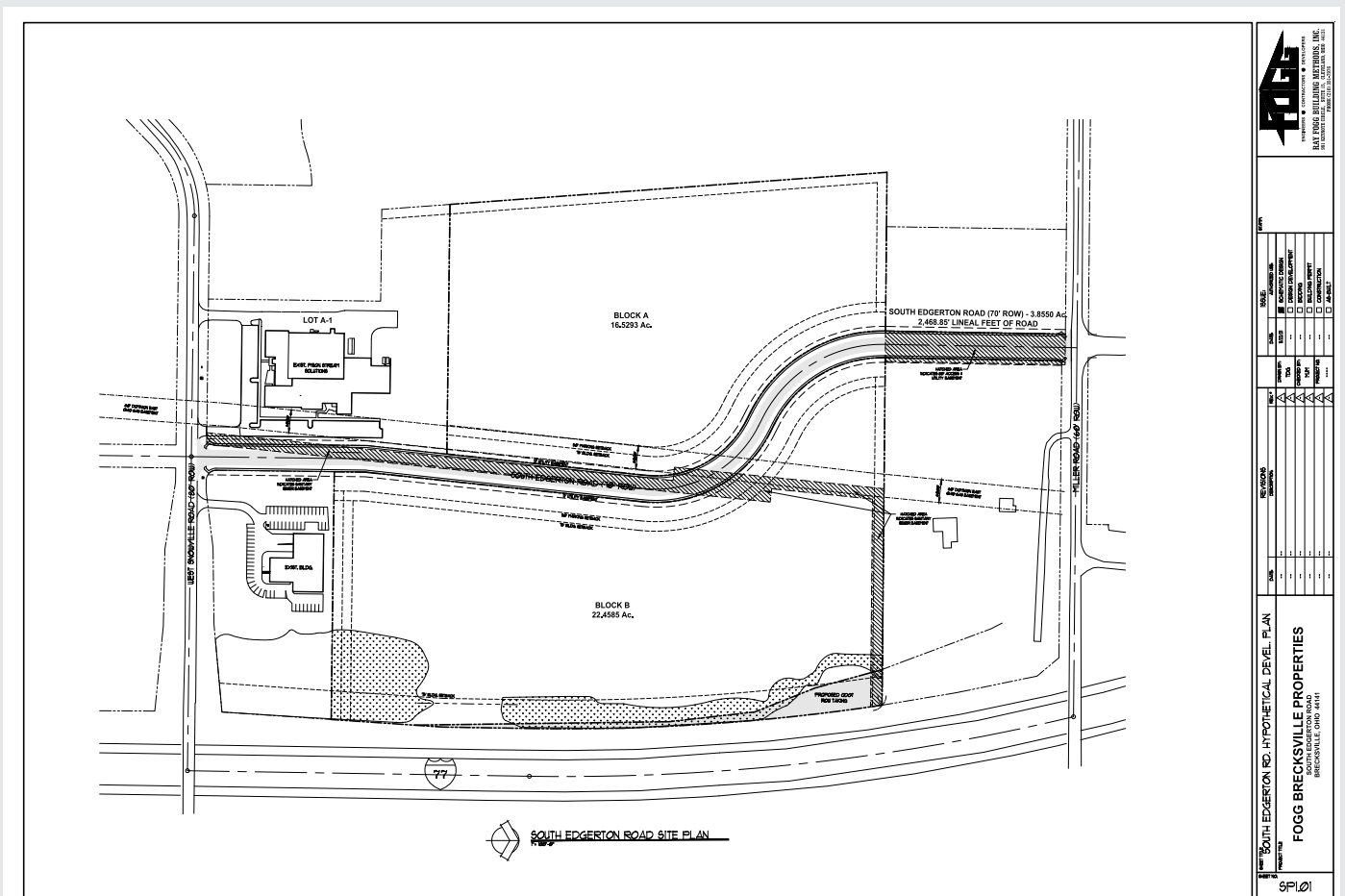
PROPERTY DATA

- Available: up to 40.69 acres
- Will build-to-suit

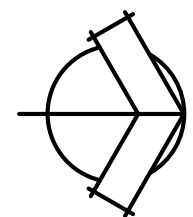
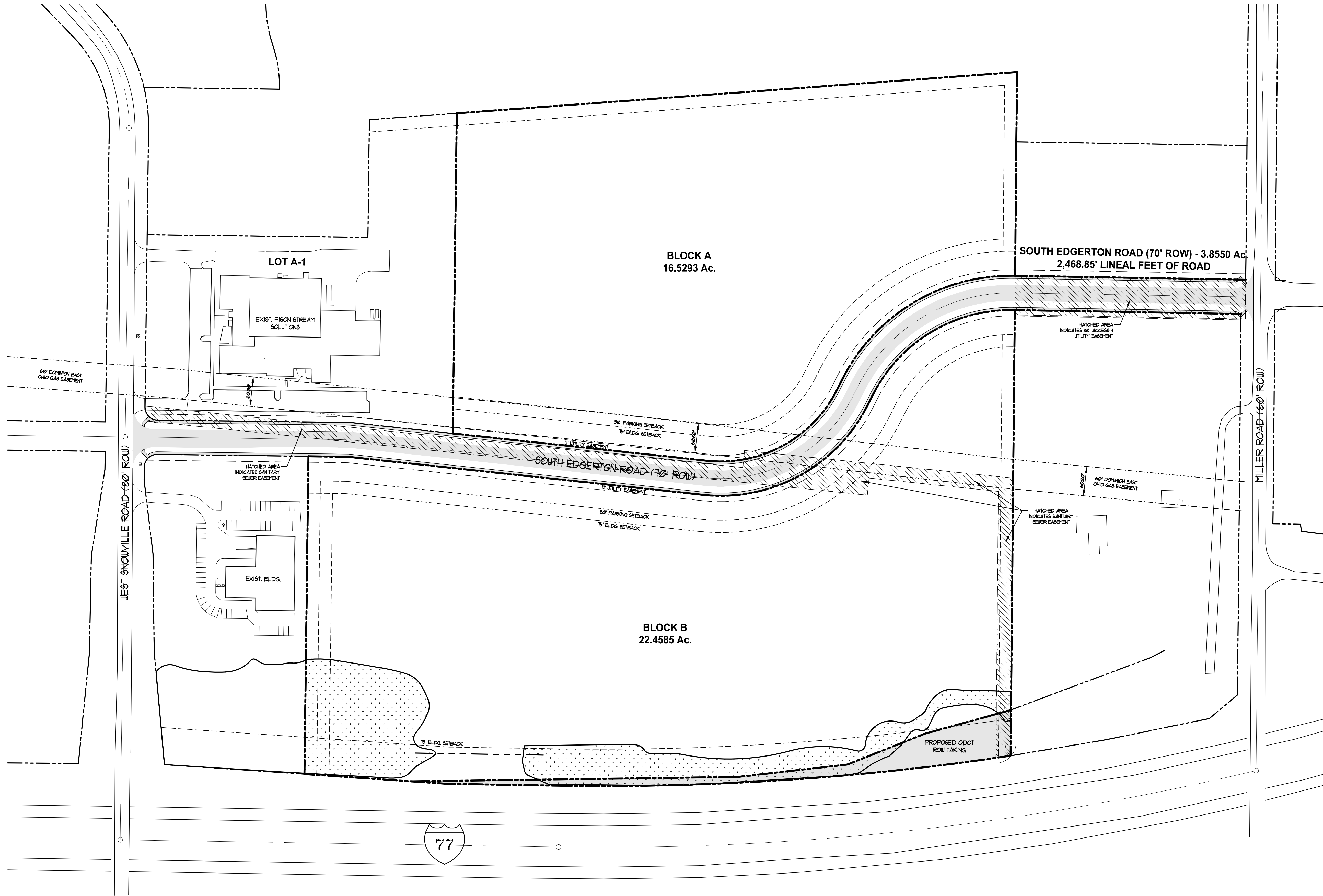
UTILITIES - All available at the street

- Electric: The Illuminating Co.
- Gas: East Ohio Gas
- Water: City of Cleveland
- Sanitary & Storm Sewer: City of Cleveland

216.351.7976
fogg.com



The information contained herein is from sources deemed reliable, but no warranty or representation is made to the accuracy hereof.



SOUTH EDGERTON ROAD SITE PLAN

1" = 100'-0"

STAMP:

ISSUE:		AUTHORIZED USE:	
DATE	BY	DATE	BY
11/27/21	TDG	<input checked="" type="checkbox"/> SCHEMATIC DESIGN	
		<input type="checkbox"/> DESIGN DEVELOPMENT	
		<input type="checkbox"/> BIDDING	
		<input type="checkbox"/> BUILDING PERMIT	
		<input type="checkbox"/> CONSTRUCTION	
		<input type="checkbox"/> AS-BUILT	

REVISIONS		REV. #	
DATE	DESCRIPTION	DATE	DESCRIPTION