

flexible spaces all the right places...



...Brooklyn Heights Business Centre I
950 Keynote Cir., Brooklyn Heights, Ohio



...Brooklyn Heights Business Centre II & III
1100 & 1200 Resource Dr., Brooklyn Heights, Ohio

“Flexible Spaces in All the Right Places” is what Fogg had in mind when designing their large portfolio of office, industrial and office/warehouse (flex) properties. Strategically located near major freeways in northeast Ohio, Fogg’s properties offer flexible floor plans, truck access and lease terms, as well as expansion opportunities for their growing customers.

Centrally located, these properties in Brooklyn Heights, Ohio, offer modern office, warehouse and flex space with great freeway access. The buildings are exceptionally attractive and well landscaped, resulting in a high profile image. Brooklyn Heights Business Centre I, II & III are located minutes from I-480, I-77, Jennings Freeway (Rt. 176), downtown Cleveland and Cleveland Hopkins International Airport.



“The entire Fogg team provided tremendous cooperation during the leasing and construction of our new corporate headquarters and high bay distribution center. We are completely satisfied with the building and with the support that we’ve received from Fogg since we moved into our new facility” - Guardian Technologies

216.351.7976
fogg.com

STANDARD BUILDING SPECIFICATIONS

Brooklyn Heights Business Centre I, II & III

The following information is a general description of the project. Please see the Individual Space Specifications for more details on each available space.



LOCATION & ACCESS

Brooklyn Heights Business Centres I, II & III

- Minutes from I-480, I-77 and Jennings Freeway Rt. 176 North
- Seven (7) miles from downtown Cleveland
- Within 10.5 miles of Cleveland Hopkins International Airport
- Immediately east of the I-480/Granger interchange and west of Rt. 21 Cloverleaf with access to I-77

PROPERTY DATA

- Brooklyn Heights Business Centre I: 49,773 SF
- Brooklyn Heights Business Centre II: 49,082 SF
- Brooklyn Heights Business Centre III: 36,290 SF

CLEAR HEIGHT

- Brooklyn Heights Business Centre I: 13' 8" to 14' 5"
- Brooklyn Heights Business Centre II: 16' 8" to 18'
- Brooklyn Heights Business Centre III: 11' 8" to 12'

COLUMN SPACING

- Brooklyn Heights Business Centre I, II & III: 30' x 30'

TRUCK ACCESS/DOORS

- Truck docks with insulated metal industrial doors
- Drive-Ins with insulated metal industrial doors
- Personnel Door: 20-gauge flush hollow metal door

ROOF

- 3-ply, pea gravel, built-up roof

EXTERIOR WALLS

- Brick and mortar

FLOOR

- 5" concrete slab

WAREHOUSE LIGHTING

- Fluorescent fixtures

SPRINKLER SYSTEM

- Wet / Ordinary hazard

HVAC

- Warehouse: gas-fired unit heaters (Heating 60 F temperature difference at 0 F outside)
- Office: gas-fired furnace with electric air conditioner (Heating 68 F temperature difference at 0 F outside; Air Conditioning 15 F temperature difference at 90 F outside)

OFFICE AREAS

- Partitions: 1/2" drywall on 3-5/8" metal studs
- Ceiling: 5/8" (2' x 4') acoustical tile on a suspended T- grid system
- Floors: commercial grade carpeting or vinyl tile (VCT)
- Entrance Doors: glass with aluminum tubular frames
- Interior Doors: 1-3/8" flush birch doors with hardware
- Windows: insulated glass with aluminum tubular frames
- Paint: two coats of Latex Paint on drywall
- Plumbing: surface mounted water closets and lavatories
- Lighting: fluorescent fixtures

PARKING & DRIVES

- Automobile Parking: asphalt
- Truck Drive / Ramps: asphalt and concrete

UTILITIES

- Electric: The Illuminating Co.
- Gas: Dominion East Ohio
- Telephone: AT&T
- Water: City of Cleveland
- Sanitary & Storm: City of Cleveland



216.351.7976
fogg.com

FOR LEASE

6,095 Sq. Ft. Warehouse – Office
950 Keynote Circle, Brooklyn Heights, Ohio

Individual Space Specifications Brooklyn Heights Business Centre 1

Office Area:	2,515 SF
Warehouse Area:	<u>3,580</u> SF
Total Area:	6,095 SF
Unit Number:	50
Drive-in doors:	One (1) 10' x 10' door
Truck Docks:	One (1) with 8' X 10' dock door
Clear Height:	13'-8" to 14'-10" warehouse clear height
Column Spacing:	30' X 30'
Electricity:	277/480 volt and 120/208 volt, 225 amp and 100 amp services
Lighting:	High lumen T8 lamps and instant start, electronic ballasts: <ul style="list-style-type: none">• Energy efficient (50% less consumption than traditional T12 lighting)• Only 7% luminary depreciation over the life of the bulb
Sprinklers:	Wet / Ordinary Hazard
Est. Operating Costs:	\$2.80/SF/YR based upon actual costs for 2022.

Operating cost estimates are based on Real Estate Taxes, Building Insurance, Common Area Maintenance and Property Management Fees for the year and the square footage listed above. Costs may vary in the future. Common Area Maintenance includes only the maintenance items performed by the owner for the benefit of the entire project, such as snowplowing, lawn care, backflow prevention test and general exterior maintenance, etc.



flexible spaces
all the right places.

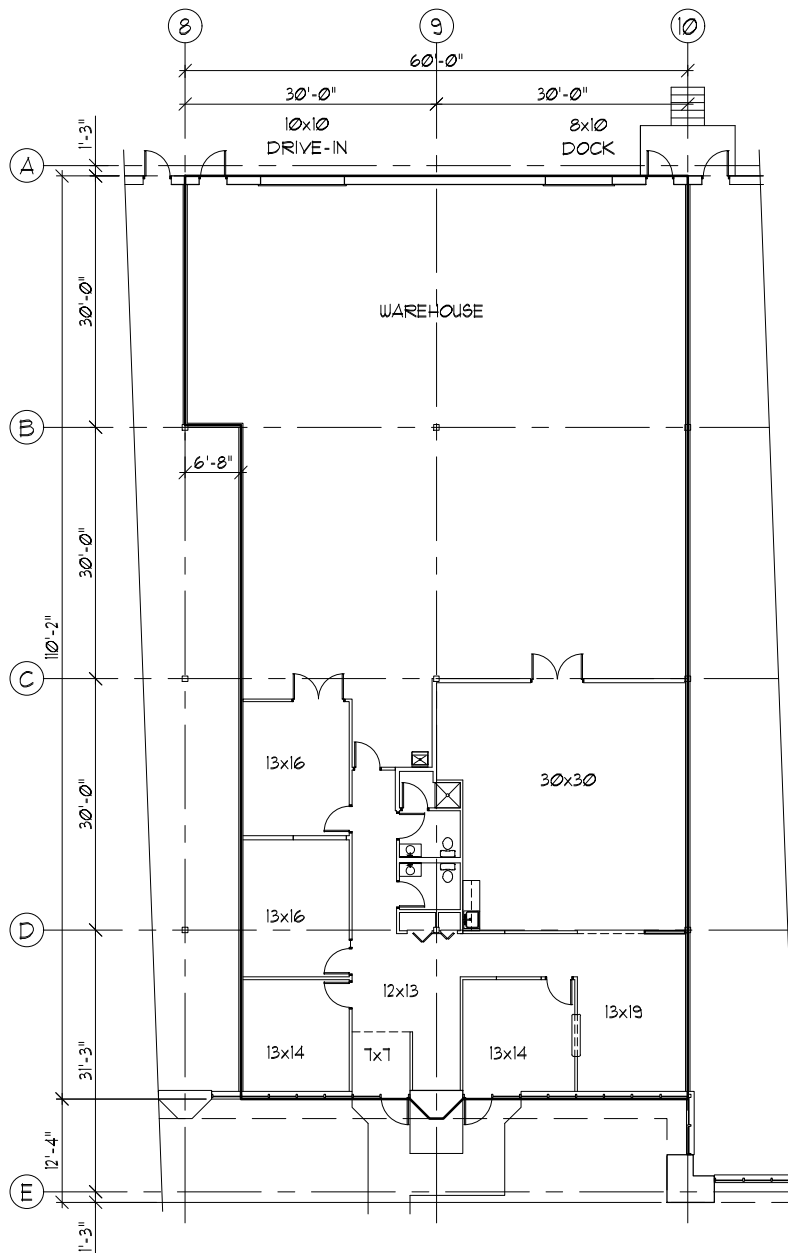
Mark Ray, Vice President
216-351-7976, ext 244
markray@foggy.com

Tom Blaz, Leasing Associate
216-351-7976, ext. 273
tblaz@foggy.com

foggy.com

RAY FOGG CORPORATE PROPERTIES, LLC – 981 Keynote Circle, Suite 15 – Cleveland, Ohio 44131

The information contained herein is from sources deemed reliable, but no warranty or representation is made to the accuracy hereof.

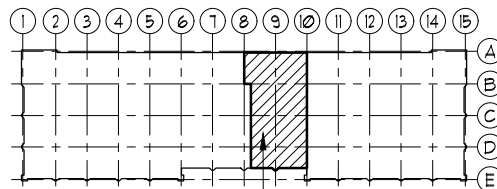


FLOOR PLAN

UNIT 50



2,515 SF OFFICE
3,580 SF WAREHOUSE
6,095 SF TOTAL



KEY PLAN

LOCATION

BROOKLYN HEIGHTS
BUSINESS CENTER I
950 KEYNOTE CIRCLE
BROOKLYN HGTs, OHIO, 44131

RAY FOGG CORPORATE PROPERTIES, LLC

981 KEYNOTE CIRCLE, SUITE 15
BROOKLYN HEIGHTS, OHIO 44131

(216) 351-7976

1-877-729-3644

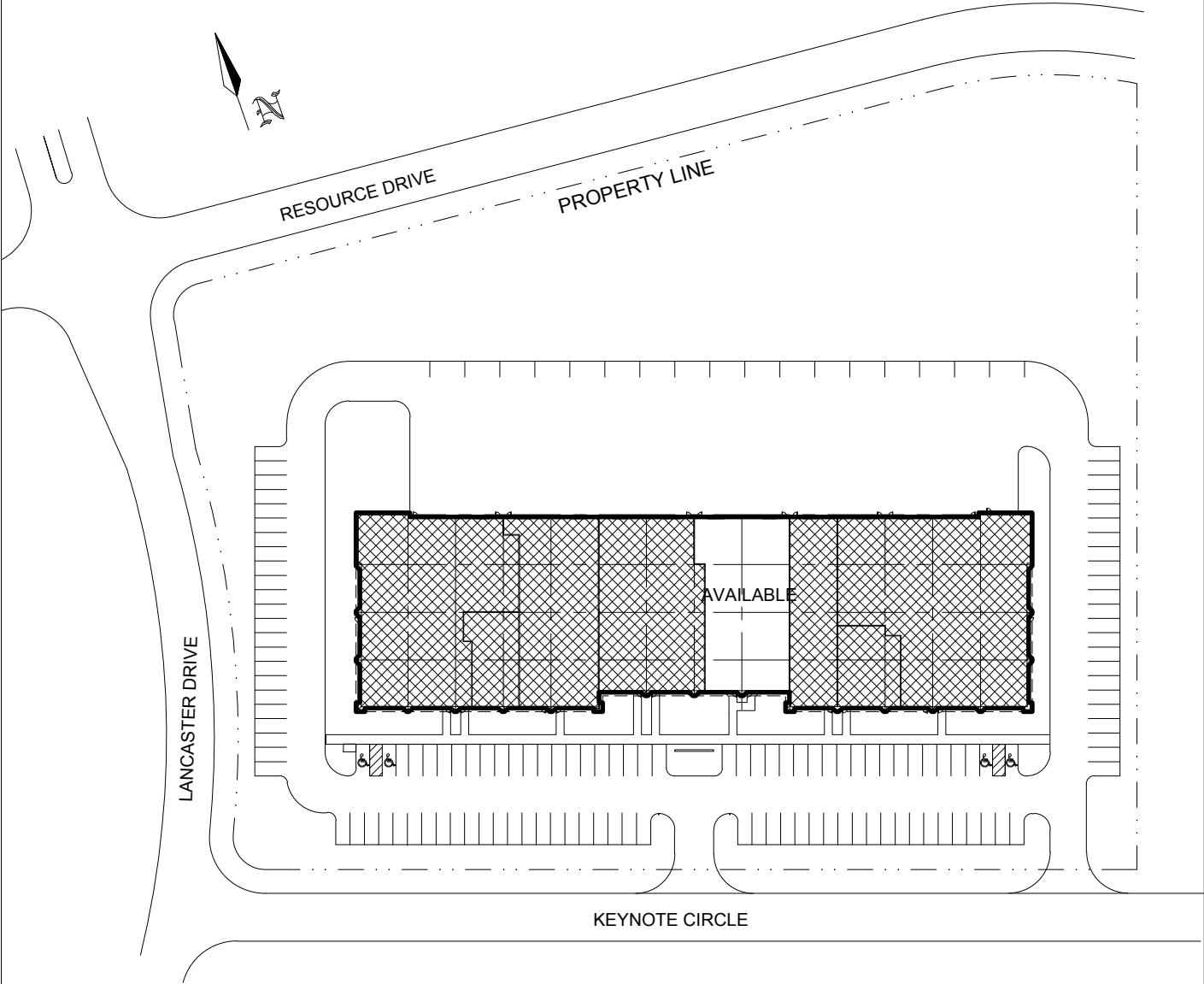


ENGINEERING • ARCHITECTURE • INTERIORS


RAY FOGG BUILDING METHODS, INC.
ONE ZEPHYRUS PARKWAY, SUITE 115, CLEVELAND, OHIO 44131
790000 (OHIO) 800-4790

DESIGNED BY	DRAWN BY	DATE	CHECKED BY	DATE
TDG	KLK	5-05-2017		

BROOKLYN HEIGHTS BUSINESS CENTRE I
950 KEYNOTE CIRCLE
BROOKLYN HEIGHTS, OHIO 44131



AVAILABLE:
OFFICE: 2,307 S.F.
WAREHOUSE: 3,788 S.F.
TOTAL: 6,095 S.F.



ENGINEERS CONTRACTORS DEVELOPERS

DRAWN BY	CHECKED	DATE	DRAWING NO.
TDG		9-25-20	950KEYNT