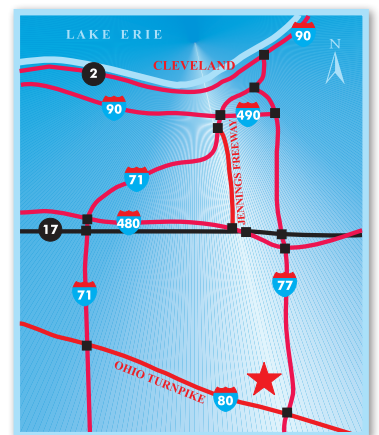


# Brecksville Business Park



## Brecksville Business Park

Fronting I-77 just north of the Ohio Turnpike in the upscale community of Brecksville, Ohio, Fogg has 40 acres of land suitable for an office development able to accommodate users up to 500,000 square feet. This freeway visible site is ideal for a corporate headquarters building or a large office campus. Located between Cleveland and Akron, the site is easily accessible from I-77, I-480, State Route 21 and the Ohio Turnpike (I-80). All utilities are available at the street and the sites are readily available for build-to-suit lease projects.



"I have worked with various property managers finding corporate expansion facilities for the last twenty-five years in five different States and by far Ray Fogg Corporate Properties management services has the smoothest operations and the nicest people to work with."

- E & R Industrial



216.351.7976  
[fogg.com](http://fogg.com)

# STANDARD SPECIFICATIONS

## Brecksville Business Park

The following information is a general description of the project.



### LOCATION & ACCESS

- I-77 freeway visibility
- Situated south of Miller Rd. and north of W. Snowville Rd. along I-77.
- Located in the high image community of Brecksville, OH
- Midway between Cleveland and Akron
- Access via W. Snowville Rd.
- Easy Access to I-77, Ohio Turnpike (I-80) and I-271

### ZONING

- Office or Laboratory

### PROPERTY DATA

- Available: up to 40.69 acres
- Will build-to-suit

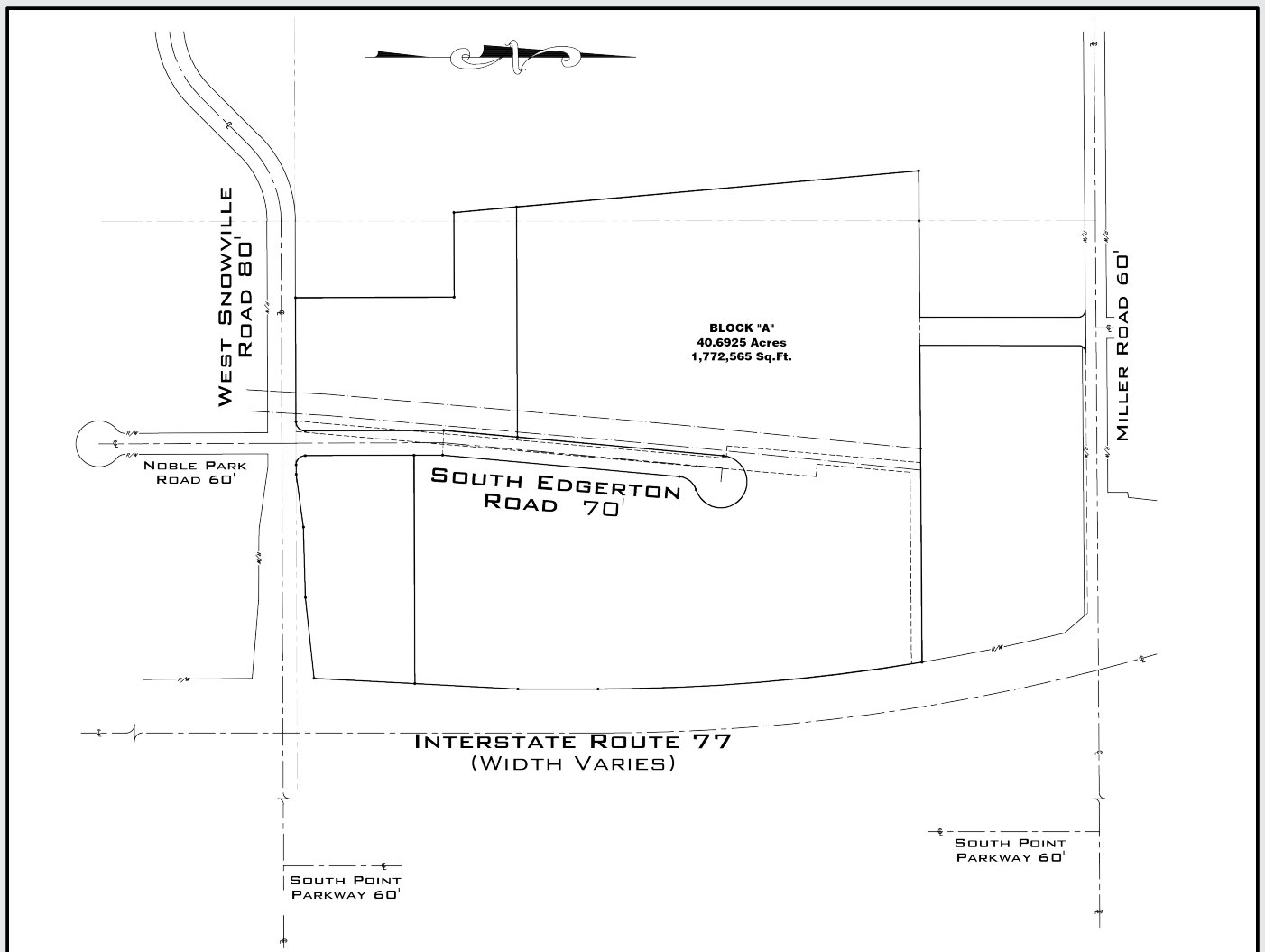
### UTILITIES - All available at the street

- Electric: The Illuminating Co.
- Gas: East Ohio Gas
- Water: City of Cleveland
- Sanitary & Storm Sewer: City of Cleveland

**216.351.7976**

**fogg.com**

"Fogg was extremely well prepared. They did the hard work and up-front planning that kept things running smoothly and without unwelcome surprises." - **Metokote Corporation**



The information contained herein is from sources deemed reliable, but no warranty or representation is made to the accuracy hereof.



